

Specification For Approval

Product: LED Flood Light

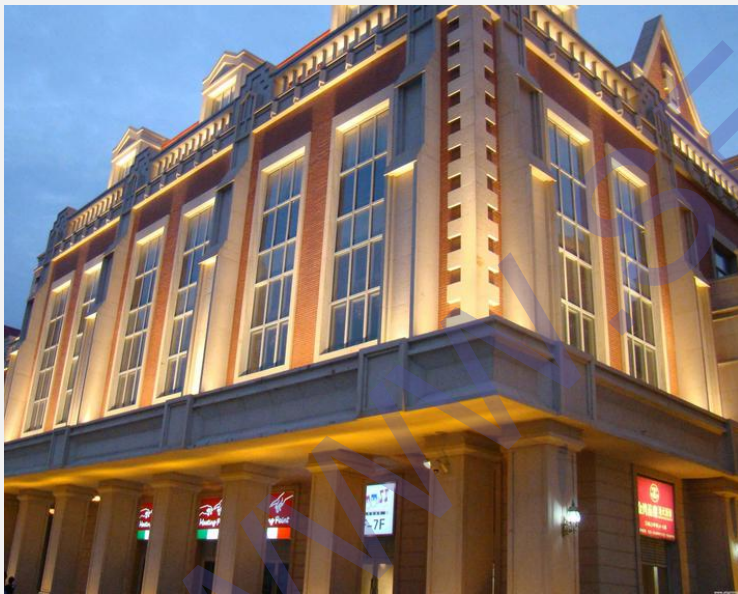
Part Number: SEF-100W

Date: 2016-08-03



Application

Tunnel, Subway, Underground Lighting; Gymnasium, Sports Stadium Lighting; Building, Billboard Lighting; Gas Station, Garage Lighting; Park, Garden Lighting; Workshop, Factory Lighting; Warehouse, Storage Lighting; Yard, Square Lighting; Road, Highway Lighting; Station, Dock, Deck, Ship, Boat Lighting; Aquarium Lighting etc



Features

- ◆ All series of MeanWell Driver, 100W & 150W & 200W Philips Driver are available Osram, Samsung, Nichia optional Chip.
- ◆ 3 Years Warranty: Epistar LED + Driver
- ◆ 5 Years Warranty: Philips (Osram, Nichia, Samsung) lamp beads+ Meanwell (Philips) Driver
- ◆ Adopting integrated Chip as light source with high lighting efficiency, high CRI (Ra>80), good quality heat dissipation, low light degradation.
- ◆ Aluminium alloy die cast shell, good strength, and high quality heat dissipation. Anti corrosion and baking varnish surface, can be for outdoor using.
- ◆ Make a dedicated luminous intensity distribution design via the aluminum reflector, there are two options for lighting distribution, one is for focusing, another is for diverging.
- ◆ High efficiency and high quality constant current drive, not only ensure the product stability, but greatly reduce the electricity consumption.
- ◆ LED light source with low light decay, high lighting efficiency, stable light color, no glare and more favorable visual health.

Remark

- ★ The below data are obtained by our company under the test of regular environment and conditions, different environment and conditions will lead to different datum.
- ★ The parameter was marked ‘*’, which stands for the data was actually valued in batch by our company and its tolerance is $\pm 5\%$.

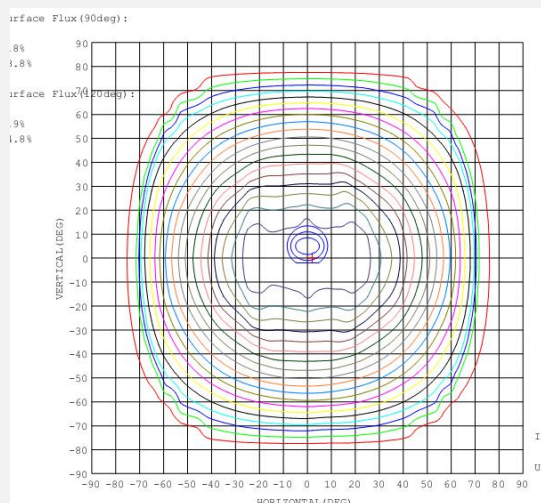
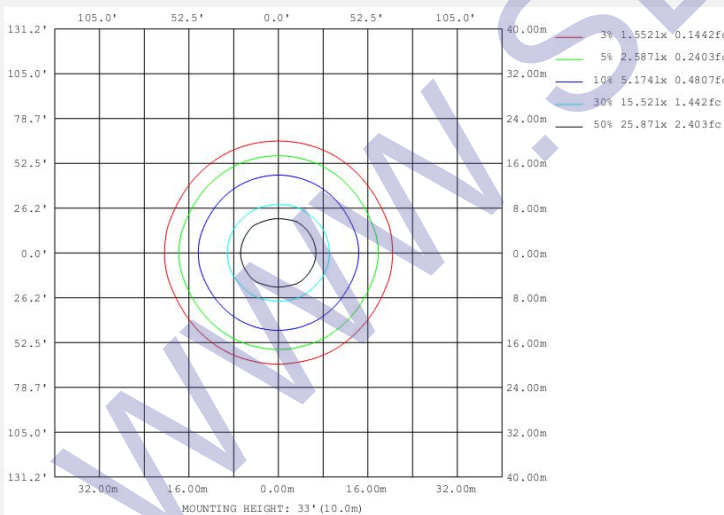
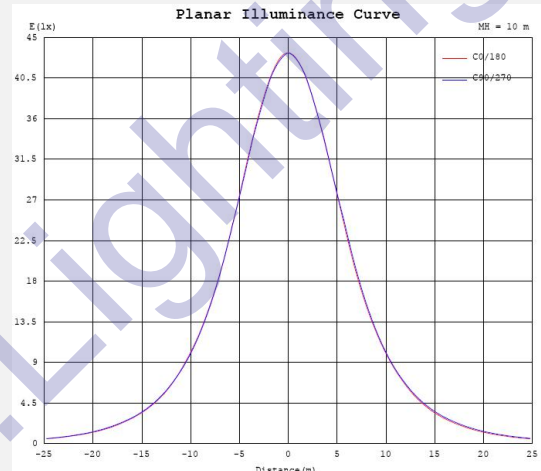
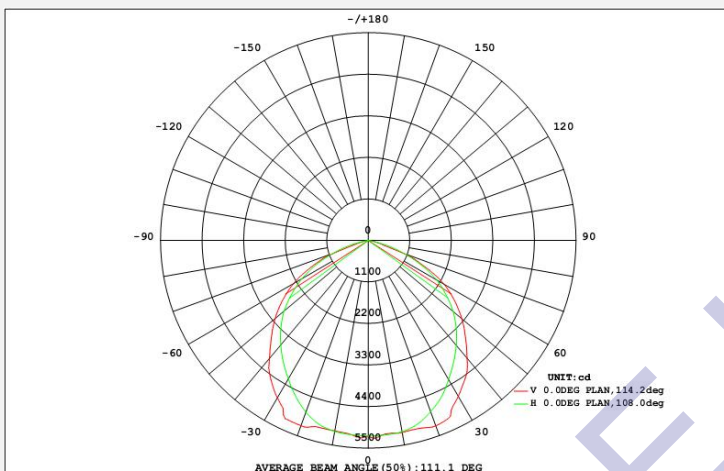
Technical Specifications

| Power Consumption | 100W |
|---------------------|----------------------------------|
| Input Voltage | AC90-305V~ 50/60Hz |
| Power Factor (PF) | >0.95 |
| Beam Angle | 120° |
| CRI (%) | ≥ 80 |
| Lifespan (hrs)@25°C | 50,000hrs* |
| Ambient Temp. (°C) | -20°C~40°C |
| Storage Temp. (°C) | -40°C~65°C |
| IP Rating | IP65 |
| Key Material | Aluminum Alloy+Toughened Glass |
| CCT(K) | 2800-3200K 4000-4500K 6000-6500K |
| Effects (lm/w)* | 100-110 |
| Lumen (lm)* | 10000-11000 |
| N.W* | 2.5KG |
| Warranty | 5Years |
| Lifespan | 30,000~50,000H |

Material Features

- Durable toughened glass with high light transmittance.
- Perfect high and low temperature resistance, less dust, very strong anti-corrosion performance
- The heat dissipation material with light weight and the thin aluminum technology.
- Use high thermal conductivity of thermal conductive silicone, and after test.
- VDE Approved neoprene cable well match with the hard operating condition of very high and low temperature.

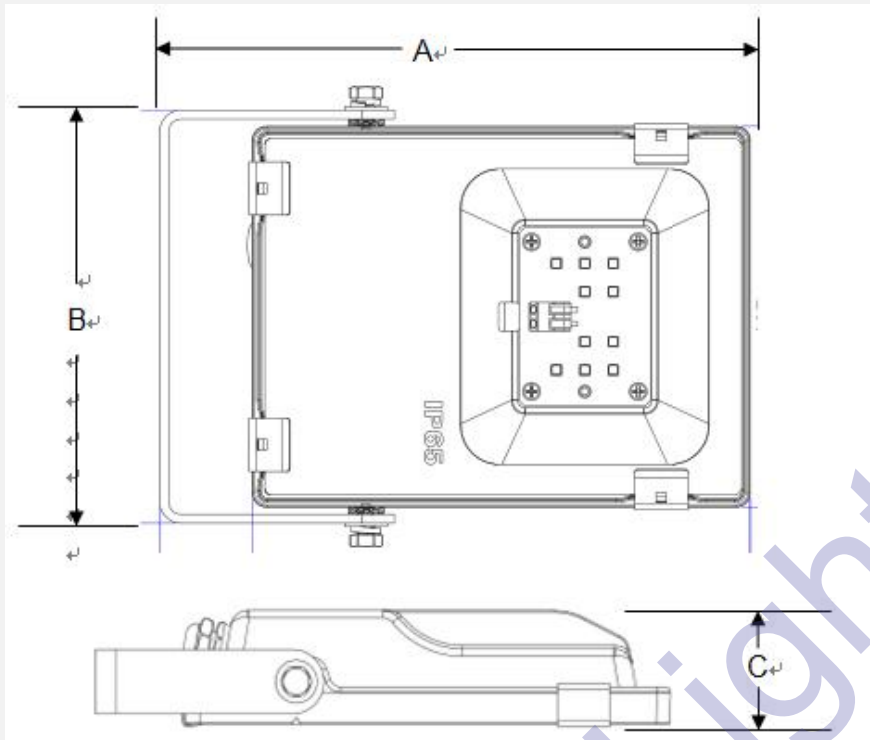
Light Distribution Graph



Optical Param

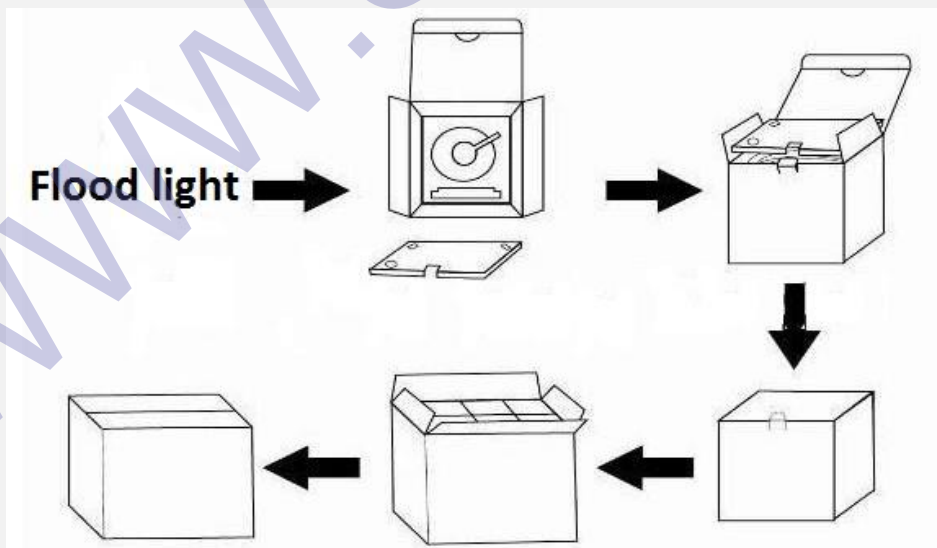
| Power Consumption* | Flux (Lux)* | | |
|--------------------|-------------|------|------|
| | 6M | 8M | 10M |
| 100W | 108.7 | 63.3 | 42.7 |

Dimension



| Part No. | A | B | C |
|----------|-------|-------|------|
| SEF-100W | 402mm | 295mm | 60mm |

Packing



| Part No. | CTN/PCS | N.W* | Packaging size |
|----------|---------|------|----------------|
| SEF-100W | 1 | 3KG | 510*430*135mm |